

Forward Standard Plate

Forward Standard Plate offers excellent performance for compacting granular soils and asphalt with durable vibrator and structural engineering



JPC-40



JPC-40WT



JPC-80



Technical Data

Model		JPC-40	JPC-40WT
Weight	kg(lb)	43(94.80)	46(101.41)
Operating Size(WxLxH)	mm	300x900x890	300x900x890
	in	11.81x35.43x35.04	11.81x35.43x35.04
Compacting Size(WxL)	mm	300X442	300X442
	in	11.81X17.40	11.81X17.40
Centrifugal Force	kN(kgf)	10(1020)	10(1020)
Vibration Frequency	vpm(Hz)	5800(96)	5800(96)
Travel Speed	m/min(ft/min)	22-25(72.18-82.02)	22-25(72.18-82.02)
Engine		Brilliant GT 241(2.4hp, 1.8kw)	
		Honda GX-100(2.8hp, 2.1kw)	
		Subaru Robin EH-09(2.4hp, 1.8kw)	

*Other Engines are available according to customers' request/ Specifications may

Others & Specials

● LIGHT EQUIPMENTS



JPC-80RH



JPC-90WT



JPC-100



JPC-110WT



Option : Wheel kit

JPC-60	JPC-80	JPC-80J	JPC-80RH	JPC-90WT	JPC-100	JPC-110WT
69-72(152-158)	89-92(196-203)	87-90(192-198)	82-85(181-187)	83-104(183-228)	105-108(231-238)	111-130(245-286)
375x960x897	415x1074x827	450x1013x933	460x930x1050	405x960x897	500x915x985	500x1146x1000
14.8x37.8x35.3	16.3x42.3x32.6	17.7x39.9x36.7	18.1x36.6x41.3	15.9x37.8x35.3	19.7x36.0x38.8	19.7x45.1x39.4
375x336	415x404	450x461	460x340	405x336	500x461	500x376
14.8x13.2	16.3x15.9	17.7x18.1	18.1x13.4	15.9x13.2	19.7x18.1	19.7x14.8
11.1(1131)	17.7(1805)	19.6(2000)	19.4(1978)	14(1428)	23.5(2400)	19.6(2000)
5700(95)	6400(106)	6400(106)	6500(108)	5700(95)	6400(106)	6400(106)
20-25(65.6-82)	20-25(65.6-82)	20-25(65.6-82)	28(91.8)	20-25(65.6-82)	20-25(65.6-82)	20-25(65.6-82)

Honda GX-160(5.5hp, 4.0kw), Robin EX-17D(6.0hp, 4.2kw)

Forward Premium Plate

Forward Premium Plate is designed to improve the working environment for plate operator. Ductile iron plate shows high strength and efficiency for compacting. And low vibration of the handle with double shock-mounted design ensures the comfortable work by reducing operator's fatigue.



JPC-940WT

Features

- Powerful compaction and wear resistance with ductile cast iron plate
- Low handle vibration and reduced engine wear with double shock-mounted design
- Protective engine frame and sealed bell cover
- Increase the work efficiency and save working time

Others & Specials

● LIGHT EQUIPMENTS



JPC-95DW



JPC-1150WT

Technical Data

Model	JPC-530WT	JPC-940WT	JPC-1150WT	JPC-95DW	
Weight	kg(lb)	54-59	87-107(192-236)	102-123(225-271)	85-105
Operating Size(WxLxH)	mm	300x747x709	400x1120x1050	500x1120x1050	400x1094x980
	in	11.8x29.4x27.9	15.7x44x41.3	19.7x44x41.3	15.7x43x38.6
Compacting Size(WxL)	mm	300x345	400x396	500x396	400x396
	in	11.8x13.6	15.7x15.6	19.7x15.6	15.7x15.6
Centrifugal Force	kn(kgf)	10(1020)	15(1529)	15(1529)	15(1529)
Vibration Frequency	vpm(hz)	6000(100)	6000(100)	6000(100)	6000(100)
Travel Speed	m/min(ft/min)	22-25(72.2-82)	22-25(72.2-82)	22-25(72.2-82)	20-25(65.6-82)
Engine		Honda GX-100(2.8hp, 2.1kw)	Honda GX-160(5.5hp, 4.0kw)Robin EX-17D(6.0hp, 4.2kw)Engine		

*Other Engines are available according to customers' request / Specifications may change due to continuous product development

● LIGHT EQUIPMENTS

Reversible Plate

Reversible Plate is ideal for foundation work, cohesive soils and trenches. It offers forward, backward and on-spot compaction by hydraulic system and easy to change the direction with single control lever.



JPC-1545R



Others & Specials

● LIGHT EQUIPMENTS



JPC-940R



JPC-2045RD



Option : Wheel kit



Option : Extension Plate(JPC-1545R & JPC-2045RD)

Technical Data

Model	JPC-835R	JPC-940R	JPC-1545R	JPC-2045RD
Weight	kg(lb) 85-88(187-194)	92-95(203-209)	150-153(331-337)	170-173(375-381)
Operating Size(WxLxH)	mm 350x1090x1090	400x1090x1090	430x1231x1045	430x1231x1045
	in 13.8x42.9x42.9	15.7x42.9x42.9	16.9x48.5x41.1	16.9x48.5x41.1
Compacting Size(WxL)	mm 350x303	400x303	430x330	430x330
	in 13.8x11.9	15.7x11.9	16.9x13.0	16.9x13.0
Centrifugal Force	kN(kgf) 16.5(1682)	18(1835)	29.4(3000)	29.4(3000)
Vibration Frequency	vpm(hz) 6000(100)	6000(100)	5600(93)	5600(93)
Travel Speed	m/min(ft/min) 28(91.8)	25(82)	23(75)	23(75)
Engine	Honda GX-160(5.5hp, 4.0kw), Robin EX-17D(6.0hp, 4.2kw)			Lombardini 15LD225, Hatz 1B20

*Other Engines are available according to customers' request / Specifications may change due to continuous product development.

Vibratory Double Drum Roller

Vibratory Double Drum Roller, JR 650 is designed to ensure the operator's safety and convenience at work site. This roller is ideal for compacting granular soil and asphalt in confined areas with hydraulic drive system, solid frame structure and smooth drum. It is easy for the maintenance and basically need low maintenance.



JR-650



Shift Lever Knob



Welding Frame Structure



Bumper



Technical Data

Model		JR-650
Weight	kg(lb)	640(1411)
Operating Size(WxLxH)	mm	634x2355x1175
	in	27.3x92.7x46.2
Drum Size(Ø xW)	mm	356x650
	in	14.0x25.5
Centrifugal Force	kN(kgf)	10.8(1100)
Vibration Frequency	vpm(rz)	3300(55)
Travel Speed	km/h	0-3.5
Engine		Kubota E75-E3-NE3
Engine Type		Water-cooled 4-cycle Diesel Engine
Engine Rated output	kW(hp)	4.0(5.5)
Fuel tank capacity	liter(gal)	4.8(1.27)
Cooling water capacity	liter(gal)	1.2(0.31)
Engine oil capacity	liter(gal)	1.3(0.34)
Water tank capacity	liter(gal)	35(9.25)

*Specifications may change due to continuous product development.

ZV-650W is walk behind roller with steering system and makes less fatigue. By swinging the guide handle, the machine changes the direction with ease.



ZV-650W

Features

- Durable hydraulic pump & motor
- Rounded full-cover housing
- Conveniently located operation levers
- One-touch keyed gull wing cover
- L sprinkler tank and strainer



Technical Data

Model	ZV-650W
Weight (kg)	665
Dimension (WxLxH, mm)	2555x700x1950
Drum Size (DxW, mm)	406x650
Centrifugal Force (kN / kgf)	10.8 / 1100
Frequency (Hz/vpm)	55 / 3300
Travel Speed (km/h)	0-3.7
Gradability(%)	36
Engine	Kubota E75-E3-NB3
Engine type	Water-cooled 4 cycle Diesel
Engine Max. Output kW (HP)	4.6 (6.3)
Starting system	Electric
Sprinkler Tank Capacity (L)	55
Fuel Tank Capacity (L)	4.8
Hydraulic oil capacity (L)	20

*Specifications may change due to continuous product development.

Tamping Rammer

JEONIL's four-cycle rammer JIR-70 is designed for high efficiency with lower exhaust emissions, less noise and better fuel economy. Outstanding body balance maximizes work efficiency and minimizes operator's fatigue.



JIR-70



Durable Bellows



Foot Lifting Handle



Wheel kit (Option)

Technical Data

Model	JIR-70			
Dimension	mm	720x415x1043	Engine	Robin EH12-2D
Shoe size	mm	280x330	Engine type	Air cooled, 4-stroke gasoline engine
Operating weight	Kg	72	Rated power	kw/rpm 2.9/4000 (1.7/3600)
Percussion rate	strokes/min	680-710	Engine speed-full load	rpm 3600
Work speed	m ³ /hr	10-15	Engine oil capacity	liter(gal) 0.40 (0.1)
Stroke of ramming shoe (up)	mm	60-85	Fuel tank capacity	liter(gal) 2.5 (0.66)
Impact force	Kgf	1730	Ramming system oil capacity	liter(gal) 0.65 (0.17)

*Specifications may change due to continuous product development

Round Compactor

Jeonil Round compactor JRC-85 is designed for excellent work performance on any job site . This round compactor is ideal for compacting sand, gravel and clay. It is easy for turning on narrow space with fast travel.



JRC-85



Option : Wheel kit

Technical Data

Model	JRC-85	
Weight	kg	85
Operating Size(WxLxH)	mm	430x430x1015
Compacting Size(WxL)	mm	430x430
Centrifugal Force	kN(kgf)	18.4(1835)
Vibration Frequency	vpm(hz)	6400/106
Travel Speed	m/min	22~26
Engine	Honda GX-160(5.5hp, 4.0kw)	
Option	Wheel kit	

Power Trowel

Power Trowel is very convenient with durability and high performance to use at the job sites to make big parking lots and large flat floors for commercial and industrial purpose.



Floating Pan(optional)

Technical Data

Model	JMT-24	JMT-36	JMT-46
Weight	kg(lb) 62(136)	95(209)	139(306)
Operating Size(WxLxH)	mm 680x1500x1000	1000x1700x1000	1300x1950x850
	in 27x59x39	39x67x39	51x77x34
Working Blade Diameter	mm(in) 609(24)	914(36)	1168(46)
Number of Blades	4	4	4
Pitch Range	0 ~ 15°	0 ~ 15°	0 ~ 15°
Trowel Speed	rpm 75 ~ 120	60 ~ 130	60 ~ 130
Efficiency	m ² /h(ft ² /h) 100(1076)	200(2152)	280(3010)
Engine	Honda GX-160, Robin EX-17D		Honda GX-270

Specifications may change due to continuous product development



Finishing Blade

High Cycle Eccentric Vibrator (JEV Series)

Patented High Cycle Eccentric Vibrator offers outstanding performances for concrete consolidation and air removal in concrete pouring with eccentric rotor and high cycle so it can save working time and improve the work efficiency.



Protective Sleeve

Technical Data

Model		JEV-28	JEV-35	JEV-40	JEV-45	JEV-55
Weight (4M)	kg(lb)	6.3(13.9)	7(15.4)	7.5(16.5)	8(17.6)	10(22.0)
Head Diameter	mm(in)	28(1.1)	35(1.38)	40(1.6)	45(1.77)	55(2.17)
Head Weight	kg(lb)	1.3(2.8)	2(4.4)	2.7(6.0)	3.4(7.5)	4.7(10.4)
Head Length	mm(in)	390(15.5)	390(15.5)	400(15.7)	400(15.7)	415(16.3)
Centrifugal Force	kN(kgf)	1.1(110)	2.3(230)	3.5(360)	5.9(600)	9.0(920)
Vibration Frequency	vpm(hz)	12000 ± 2000 (200 ± 33)				
Vibration Amplitude	mm	1.48	2.26	2.45	2.82	3.39
Flexible Shaft Length	m(ft)	Standard 4.0(13.1), Maximum 6.0(20.0)				

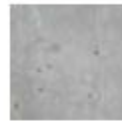
*Specifications may change due to continuous product development.



Non-Vibrating
Over the 10mm - 7ea
Over the 5mm - 93ea



Normal Vibrator
Over the 10mm - 2ea
Over the 5mm - 49ea



Jeonil Eccentric Vibrator
Over the 10mm - 0ea
Over the 5mm - 4ea

Drive Unit for High Cycle Eccentric Vibrator

Electric Motor



JEVM

Technical Data

Model	JEVM	
Voltage(AC)	V	115 230
Weight	kg(lb)	5.8(13)
Overall Size	mm(in)	350 (13.8)x160 (6.3)x230 (9.0)
Power	kW(hp)	1.5 (2.0) 1.6 (2.1)
Current(max)	A	13 7
Frequency	Hz	50 / 60
Phase		Single
Motor Type		Universal electric motor
Unloaded Speed	rpm	17,500
Loaded Speed	rpm	12,000
Connection to Flexible shaft		Square socket
Possible Service		1) Portable (Horizontal & Vertical) 2) Shoulder strap

Engine Base Frame



JEVE

Motor Back-Pack



JEV-MB

Engine Back-Pack



JEV-EB

Pendulum Vibrator (JIV Series)

Pendulum Vibrator is widely used for concrete consolidation and air removal in various construction sites and ensures stronger and quality concrete with clean surface.



Technical Data

Model		JIV-28	JIV-32	JIV-38	JIV-45	JIV-50	JIV-60
Weight(6M)	kg(lb)	12(26.5)	13(28.7)	14(30.9)	15(33.1)	20(44.1)	22(48.5)
Head Diameter	mm(in)	28(1.10)	32(1.26)	38(1.5)	45(1.77)	50(1.97)	60(2.36)
Head Length	mm(in)	445(17.5)	445(17.5)	445(17.5)	445(17.5)	545(21.5)	545(21.5)
Revolution of Flexible Shaft	rpm	3000 ~ 3600					
Vibration Frequency	vpm(hz)	9000 ~ 12000					
Vibration Amplitude	mm	1.2	1.4	1.6	2.0	2.2	2.4
Flexible Shaft Length	m(ft)	Standard 6.0(19.7), Maximum 7(27.5)					

*Specifications may change due to continuous product development

Light Type Pendulum Vibrator (JIVL Series)

Light type Pendulum Vibrator is applied with high quality rubber with Compression instead of Steel outliner. So it improves durability and prevents to rebar damage and corrosion, rebar jam in working site.



Technical Data

Model		JIVL-28	JIVL-32	JIVL-38	JIVL-45	JIVW-50	JIVW-60
Weight(6M)	kg(lb)	11(24.3)	12(24.5)	13(28.7)	14(30.9)	20(44.1)	22(48.5)
Head Diameter	mm(in)	28(1.10)	32(1.26)	38(1.5)	45(1.77)	50(1.97)	60(2.36)
Head Length	mm(in)	445(17.5)	445(17.5)	445(17.5)	445(17.5)	545(21.5)	545(21.5)
Revolution of Flexible Shaft	rpm	3000 ~ 3600					
Vibration Frequency	vpm(hz)	9000 ~ 12000					
Vibration Amplitude	mm	1.2	1.4	1.6	2.0	2.2	2.4
Flexible Shaft Length	m(ft)	Standard 6.0(19.7), Maximum 7(27.5)					
Hose assembly	mm	27	27	27	27	33	33
Flexible shaft	mm	8	8	8	8	13	13

*Specifications may change due to continuous product development

Drive Unit for Pendulum Vibrator

Electric Motor



JIVM

Technical Data

Model		JIVM	
Power	W(hp)	900(1.2)	1500(2.0)
Voltage	V	220	
Current	A	5.5	11
Phase		Single	
Speed	rpm	3450 at 60Hz 2850 at 50Hz	
Motor Type		CSR type	
Size(WxLxH)	mm	180x330x230	210x360x230
	in	7.0x13.8x9.0	8.5x14.2x9.0
Weight	kg(lb)	8.9(19.6)	11.5(25.3)
Available Coupling		Pin, Ball, Dynapac Type	

Technical Data

Model		JIVE	
Weight	kg(lb)	16(35.27)	
Size(WxLxH)	mm	340x340x370	
	in	13.39x13.39x14.57	
Available Engine		Brilliant GT241 Honda GX-100 Robin EH-09	
Available coupling		Pin, Ball, Dynapac Type	

Engine Table



JIVE

Turntable

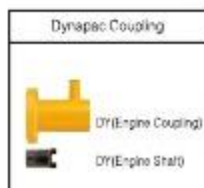


JTE

Technical Data

Model		JTE	
Weight	kg(lb)	21(46.2)	
Size(WxLxH)	mm	515x490x330	
	in	20.3x19.2x13.0	
Available Engine		Honda GX 120, 160, 200 Robin EX-17, EY20, DY23D Lombardini 15LD225	
Available coupling		Pin, Ball, Dynapac Type	

Engine Coupling & Engine Coupling Type



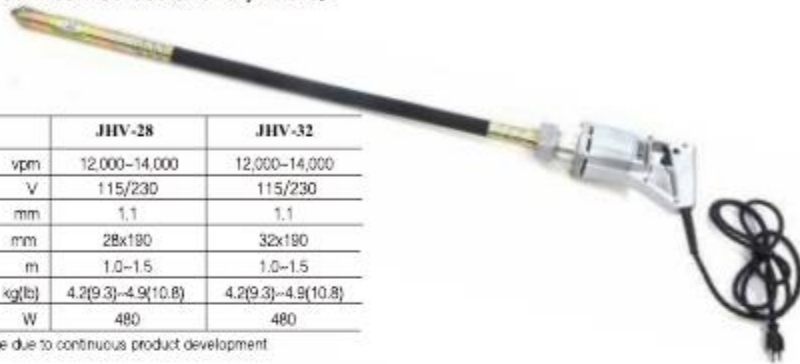
Handy Vibrator (JHV Series)

Handy Vibrator is portable and multi purpose high cycle eccentric vibrator. It is lightweight and easy to handle so it can be useful everywhere.

Technical Data

Model		JHV-28	JHV-32
Frequency	vpm	12,000-14,000	12,000-14,000
Voltage(AC)	V	115/230	115/230
Vibration Amplitude	mm	1.1	1.1
Head Dia. x Length	mm	28x180	32x180
Total Length	m	1.0-1.5	1.0-1.5
Weight	kg(lb)	4.2(9.3)-4.9(10.8)	4.2(9.3)-4.9(10.8)
Power	W	480	480

Specifications may change due to continuous product development



Handy Pipe Vibrator (JHPV Series)

Technical Data

Model		JHPV-28	JHPV-32
Frequency	vpm	12,500 - 15,000	12,500 - 15,000
Voltage(AC)	V	115/230	115/230
Vibration Amplitude	mm	1.4-2.0	1.5-2.0
Head Dia. x Length	mm	28X500, 800, 1000	32X500, 800, 1000
Total Length	mm	765-1265	765-1265
Weight	kg(lb)	3.9(8.6)-5.2(11.5)	4.3(9.5)-5.7(12.6)
Power	W	480	480

Specifications may change due to continuous product development



Handy external vibrator (JHEV Series)

Handy external vibrator is portable, lightweight and easy to handle for surface finishing. It's vibration is given from outside of wall surface.



Technical Data

Model		JHEV-480
Frequency	vpm	9,000-14,000
Vibration Amplitude	mm	0.6
Vibration Board Size	mm	75x102
Current(A) / Voltage(V)		5.5 / 220
Weight (Kg)		4.9
Power (w)		480

Specifications may change due to continuous product development

Submersible Pump

Submersible Pump is widely used in construction fields as it can be used without the access to power supply. The pump can be driven by the engines through flexible shaft inserted in the hose.



Technical Data

Model	Discharge Diameter (inch)	Max. Lift(m)	Max. Capacity(l/min)	Hose Length(m)	Weight(kg) w/o drive unit	Engine HP/RPM(Max.) as required
JIP	2-3	18	1,500	Standard 6M (4m-7m available)	23	3.5-6.0HP/3,600RPM Gasoline engine

Specifications may change due to continuous product development

Vibratory Screed

JEONIL's Vibratory Screed offers consistent distribution of concrete on the whole blade length so it can meet the demands on a variety of jobsites. It's lightweight, easy to handle and reducing the handle vibration with isolator rubbers.



Technical Data

Model	JSV-35	
Weight	kg(lb)	15(33)
Operating Size(WxLxH)	mm	770x900x1000
	in	30x35x40
Vibration Frequency	vpm(hz)	7000(117)
Blade Size	ft(m)	8-14(2.44-4.27)
Engine	Honda GX-35	
Engine type	Air cooled 4-cycle gasoline engine	
Power	kW(hp)	1.2(1.6)
Fuel tank capacity	liter(gal)	0.65(0.17)

*Specifications may change due to continuous product development

● LIGHT EQUIPMENTS

Floor Saw

Floor Saw shows outstanding cutting performance with smooth and powerful operation so it is ideal for cutting asphalt and concrete for a variety of job sites.



JIC-30



Others & Specials

● LIGHT EQUIPMENTS



JIC-14



JIC-20



JIC-20G

Technical Data

Model		JIC-14	JIC-20	JIC-20G	JIC-30
Weight	kg(lb)	75(165)	150(331)	150(331)	350(772)
Operating Size(WxLxD)	mm	510x940x825	610x1210x1020	610x1210x1020	755x1495x1090
	in	20x37x33	24x48x40	24x48x40	27.5x56x38.5
Blade Capacity	in	10 ~ 14	14~20	14 ~ 20	14 ~ 30
Maximum Cutting Depth	mm(in)	120(4.7)	180(7.0)	180(7.0)	300(11.8)
Water Tank Capacity	liter(gal)	18(4.8)	39(10.3)	39(10.3)	outside
Arbor Diameter	mm	27 or 25.4 (as required)			
Depth Adjustment Mechanism		Handle Rotation	Handle Rotation	Handle Rotation	Hydraulic
Drive Mechanism (Forward & backward)		Manual Push	Chain Type	Gear Type	Hydrostatic Transmission
Capacity of Fuel tank on Machine	liter(gal)	-	-	-	20(5.28)
Engine		Honda GX-160, GX-270	Honda GX-390, GX-630		Kohler PA-CH740

*Other Engines are available according to customers' request / Specifications may change due to continuous product development

Re-bar Cutter

Re-bar Cutter have an excellent cutting capacity owing to a strong hydraulic. And it is suitable for small and middle works due to lightweight and portable.



JMC-25H



JMC-25W



JMC-32

Technical Data

Model	Unit	JMC-25H	JMC-25W	JMC-32	JMC-42
Max. Bar Dia	mm(inch)	25(1.0)	25(1.0)	32(1.3)	42(1.7)
Motor	kw(hp)	1.9(2.5)	1.5(2.0)	2.2(3.0)	3.75(5.0)
Power(Voltage)	V	110/220	220/380	220/380	220/380
Phase		single		single/Three	
Dimension	mm	485x140x250	722x530x637	480x600x920	890x700x1310
	inch	19.1x5.5x9.9	28.4x20.8x25.07	18.9x23.6x36.2	35x27.5x51.6
Weight	kg	23kg	200kg	570kg	905kg

*Specifications may change due to continuous product development

Re-bar Bender

Re-bar Bender is suitable for small and middle bending works. And it is strong and firm with a durability-oriented design



JMB-25



JMB-32L



JMB-32

Technical Data

Model	Unit	JMB-25	JMB-32	JMB-32L	JMB-32H	JMB-42H
Max. Bar Dia	mm(inch)	25(1.0)	32(1.3)	32(1.3)	32(1.3)	42(1.7)
Motor	kw(hp)	2.2(3.0)	2.2(3.0)	4.4(6.0)	3.75(5.0)	5.5(7.5)
Power(Voltage)	V	110/220	110/220	110/220	220/380	220/380
Phase		single	single	single	single/Three	single/Three
Dimension	mm	450x400x350	570x500x560	640x570x570	830x830x740	930x910x740
	inch		22.4x19.7x22.1	25.2x22.5x22.5	32.7x32.7x29.2	36.7x35.9x29.2
Weight	kg	110kg	166kg	196kg	517kg	763kg
Bending Speed		180°/6sec	180°/6sec	180°/6sec	180°/6sec	180°/3.6sec
Bending Angle		~180°	~180°	~180°	~180°	~180°

*Specifications may change due to continuous product development